

Worksheet -endocrine system

Introduction:

The general function of the endocrine system is to integrate body systems, in conjunction with the nervous system.

ENDOCRINE GLAND = a gland that secretes hormones directly into the bloodstream.

HORMONE = a very powerful substance secreted by an endocrine gland into the bloodstream.

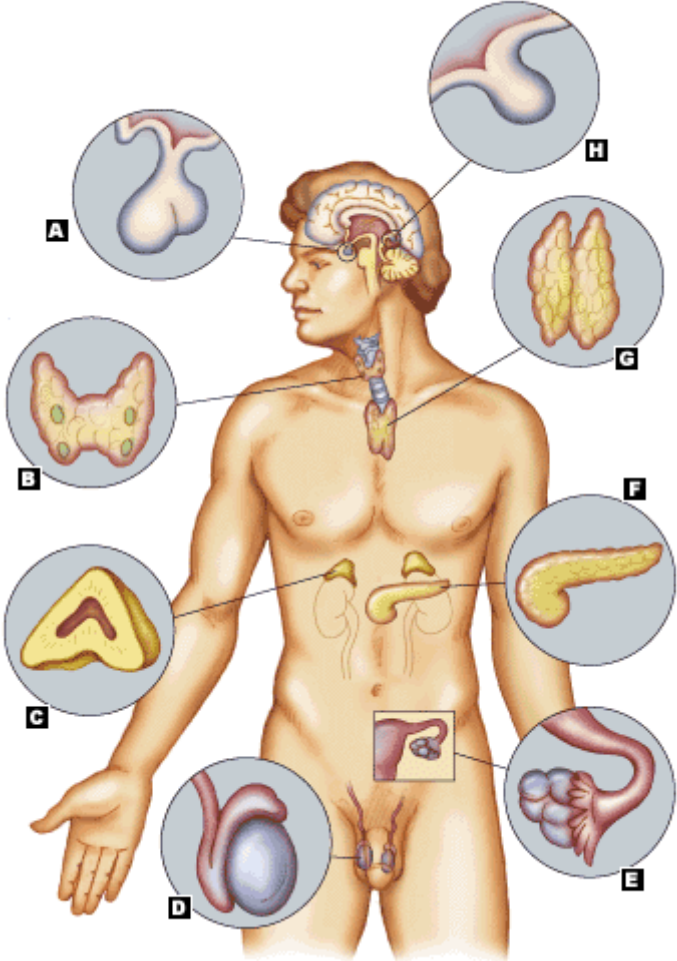
They include the following glands:

1. thymus
2. pituitary (anterior, superior lobe)
3. adrenals (medulla,cortex)
4. pineal gland
5. pancreas
6. thyroid
7. testes
8. parathyroids
9. ovaries

Tasks:

1. What are the names of these glands in your language?

2. Label the picture.



Obr.6

3. There are examples of some hormones. Write the names of a gland which produces them.

Growth Hormone (HGH) controls growth of the body.

Anti-Diuretic Hormone (ADH) targets the kidney tubules, causes the kidney tubules to reabsorb water back into the bloodstream, and therefore controls water balance and blood pressure.

Thyroxine (T4) & Triiodothyronine (T3) regulate metabolism.

Insulin decreases blood glucose levels, moves glucose from bloodstream into cells.

Adrenalin targets the heart (increased heart rate and blood pressure), smooth muscle contraction (blood vessels,), the lungs (increased breathing: rate, rhythm, depth).

Estrogen develops and maintains female secondary sexual characteristics.

Testosterone develops and maintains male secondary sexual characteristics.

4. Which hormones contain iodine?