

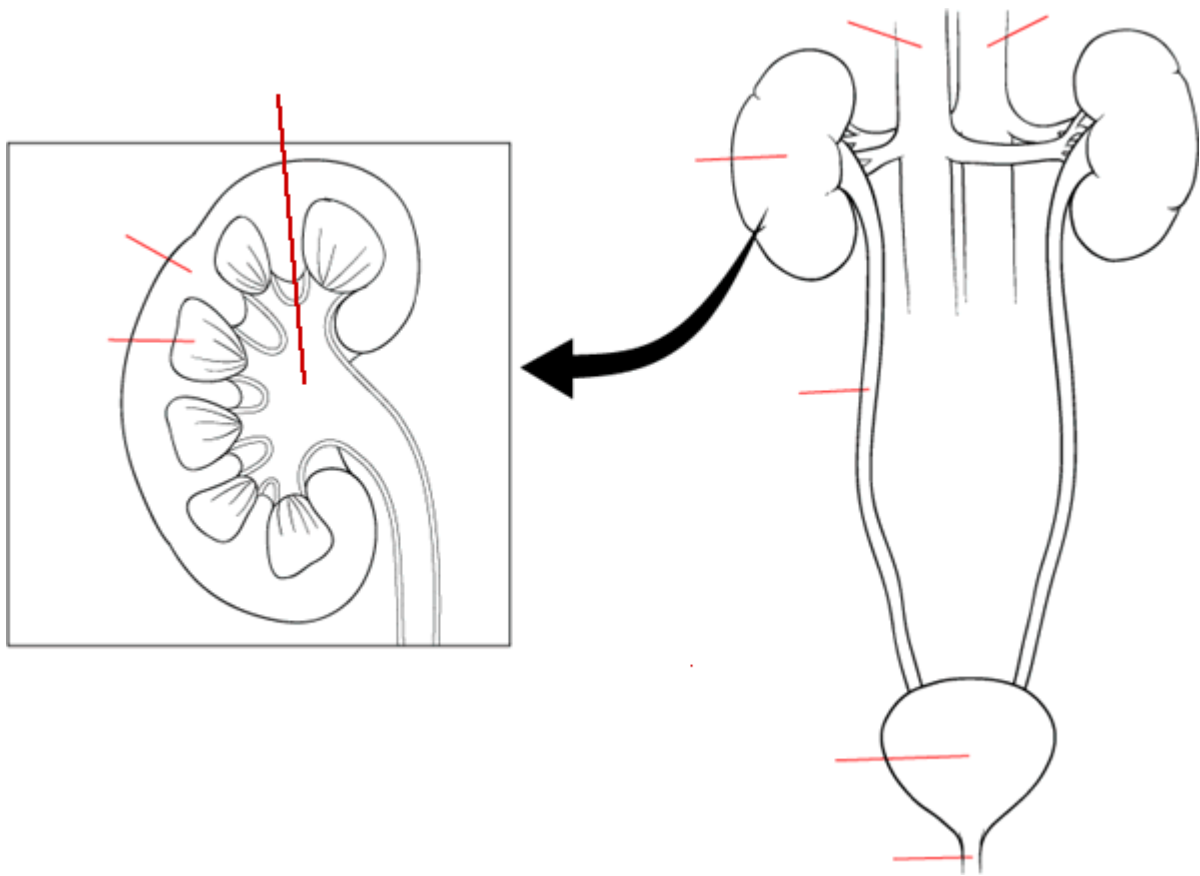
Excretory system – worksheet

1. Complete the descriptions with these words:
bladder, urethra, kidneys, ureters, urine

..... - two ducts where urine travels to the bladder
..... - a muscular bag that holds urine
..... - a pair of bean- shaped organs that filter the blood
..... - a duct from the bladder which takes urine out of the body
..... - liquid waste produced by the kidneys

2. Describe the picture. Use these words: bladder, ureter, urethra, kidney, sphincter, renal artery, renal vein, medulla, cortex, renal pelvis

Obr.4



3. Draw a nephron and label your picture with these terms: glomerulus, Bowman's capsule, proximal tubule, distal tubule, Loop of Henle, collecting duct, afferent arteriole, efferent arteriole

4. Show where these two processes take place in your picture above. FILTRATION, REABSORPTION